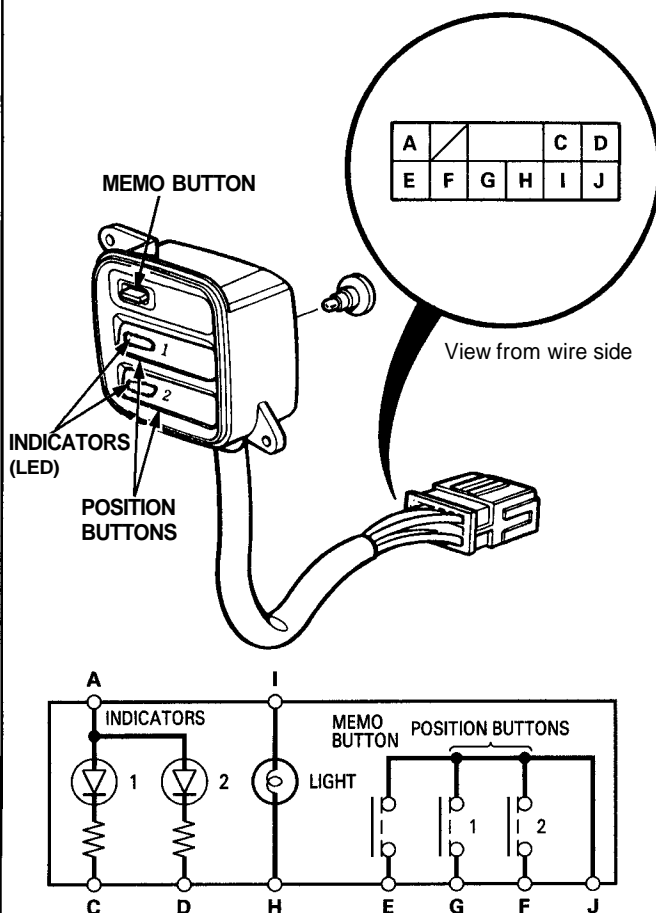


Driving Position Memory System (DPMS)

Driving Position Memory Switch Test

1. Remove the driver's door panel (see [section 20](#)), then disconnect the 10-P connector from the driving position memory switch.
2. Remove the memory switch.
3. Check for continuity between the terminals in each switch position according to the table.

Terminal		A		C	D	E	F	G	H	I	J
Position											
MEMO BUTTON	ON					○	—	—	—	—	○
	OFF										
POSITION BUTTON 1	ON							○	—	—	○
	OFF										
POSITION BUTTON 2	ON					○	—	—	—	—	○
	OFF										
INDICATOR 1		○	⊗	○							
INDICATOR 2		○	⊗	○							
ILLUMINATION											



Tilt/Extend-retract Motor Test

1. Pry the courtesy light controller and TCS switch (LS) out from the dashboard lower cover, then remove the three screws, and remove the dashboard lower cover (see page [23-180](#)).
2. Remove the steering column tilt cover (see page [23-180](#)).
3. Disconnect the left side wire harness 2-P connector from the tilt or extend-retract motor 2-P connector.
4. Test the motor in each direction by connecting power and ground according to the table.

CAUTION: When a motor stops running, disconnect the power terminal immediately.

		Terminal			
Position		A	B	C	D
TILT MOTOR	UP	⊕	⊖		
	DOWN	⊖	⊕		
EXTEND-RETRACT MOTOR	RETRACT			⊕	⊖
	EXTEND			⊖	⊕

